



· KAI DELA CRUZ · KAEDEN HAM · SAMARA RAUCH · WADE ROBBINS ·

AESTHETIC

Our design is based off of Modern Multi residential buildings commonly found in the City of Winnipeg. the building offers a simple yet appealing look incorporating wood, steel and brick.

PROJECT DESCRIPTION

A Four-storey, 16 unit multi residential building planned for development in the City of Winnipeg to meet the growing needs of the community.

DAYLIGHTING & VIEW

The high efficiency windows and walls allow us to have larger windows in the living room, filling a majority of the units with daylight and opening the space to the surrounding exterior views

ENVELOPE PERFORMANCE

Our building reaches beyond the thermal requirements of the building through the use of an ICF wall system and triple pane windows/doors.

LOCAL MATERIALS

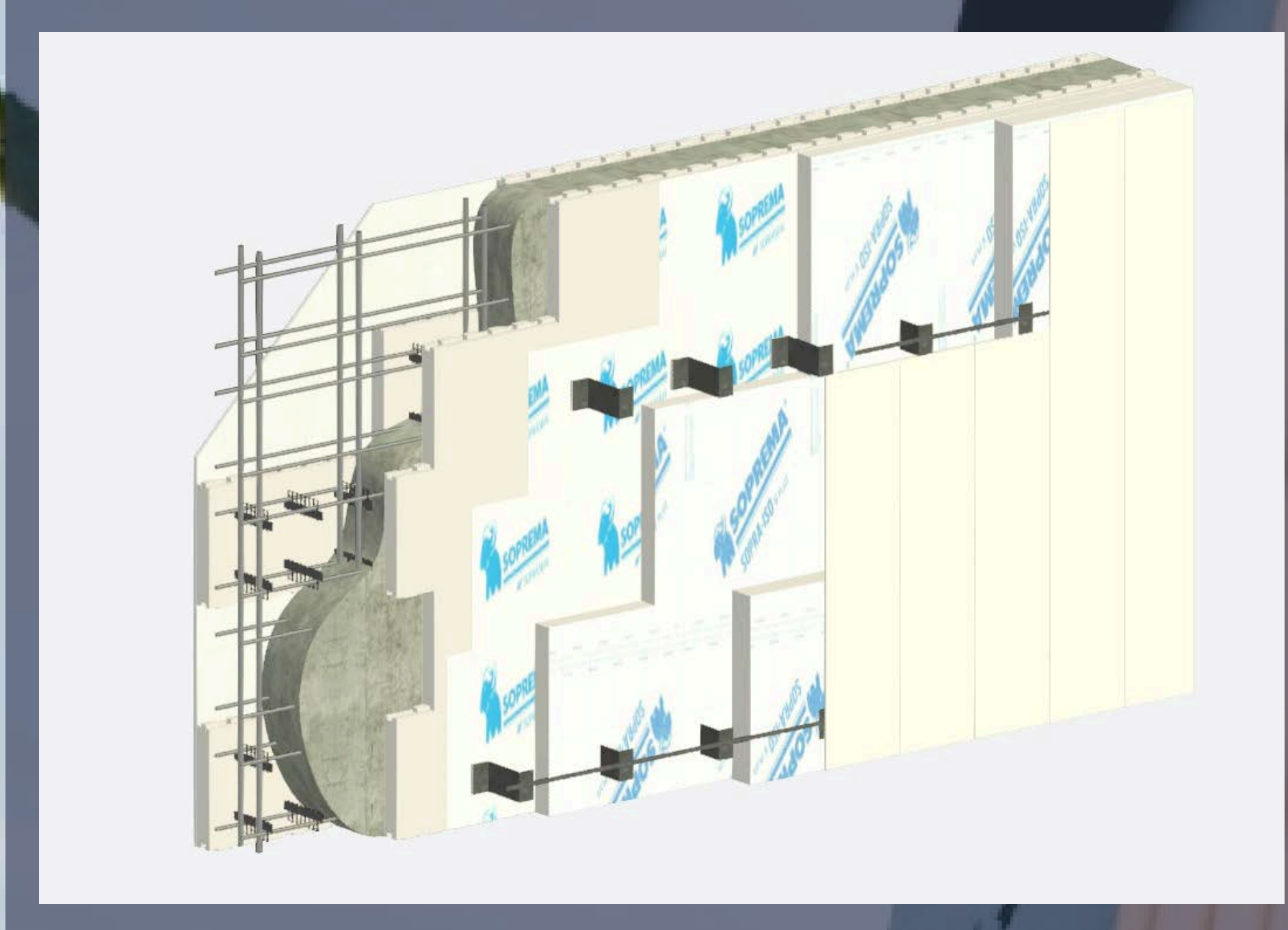
A majority of materials are either sourced locally or have a distribution location including:

- Element ICF
- Duxton Windows & Doors
- Westman Steel
- IKO
- Soprema
- Duradeck
- Gentek Building Products
- Star Building Materials
- Certainteed
- Simpson Strong Tie
- Ken's Carpets
- Truss FAB



WALL PERFORMANCE

The walls of the building perform at a R-value of 66.87.



- 24 mm Vertical Metal Cladding
- 102 mm SOPRA-ISO V Plus
- 76 mm SOPRA-ISO V Plus
- SOPRASEAL Stick 1100 T
- 203 mm ICF Block Core
- 12.7 mm Gypsum Board

ROOF PERFORMANCE

The Roofs of the building perform at a R-value of 71.80.

- Nordic Fibre Glass Reinf. Shingles
- 1.5 mm Roof Felt
- 16 mm Plywood Sheathing
- 38x140 Wood Truss
- 516 mm SOPRA Cellulose Blown Insulation
- 38x89 truss chord with SOPRA Cellulose Blown Insulation
- CGSB Poly Vapour Barrier
- 16 mm Gypsum Board

• GALLERY •

