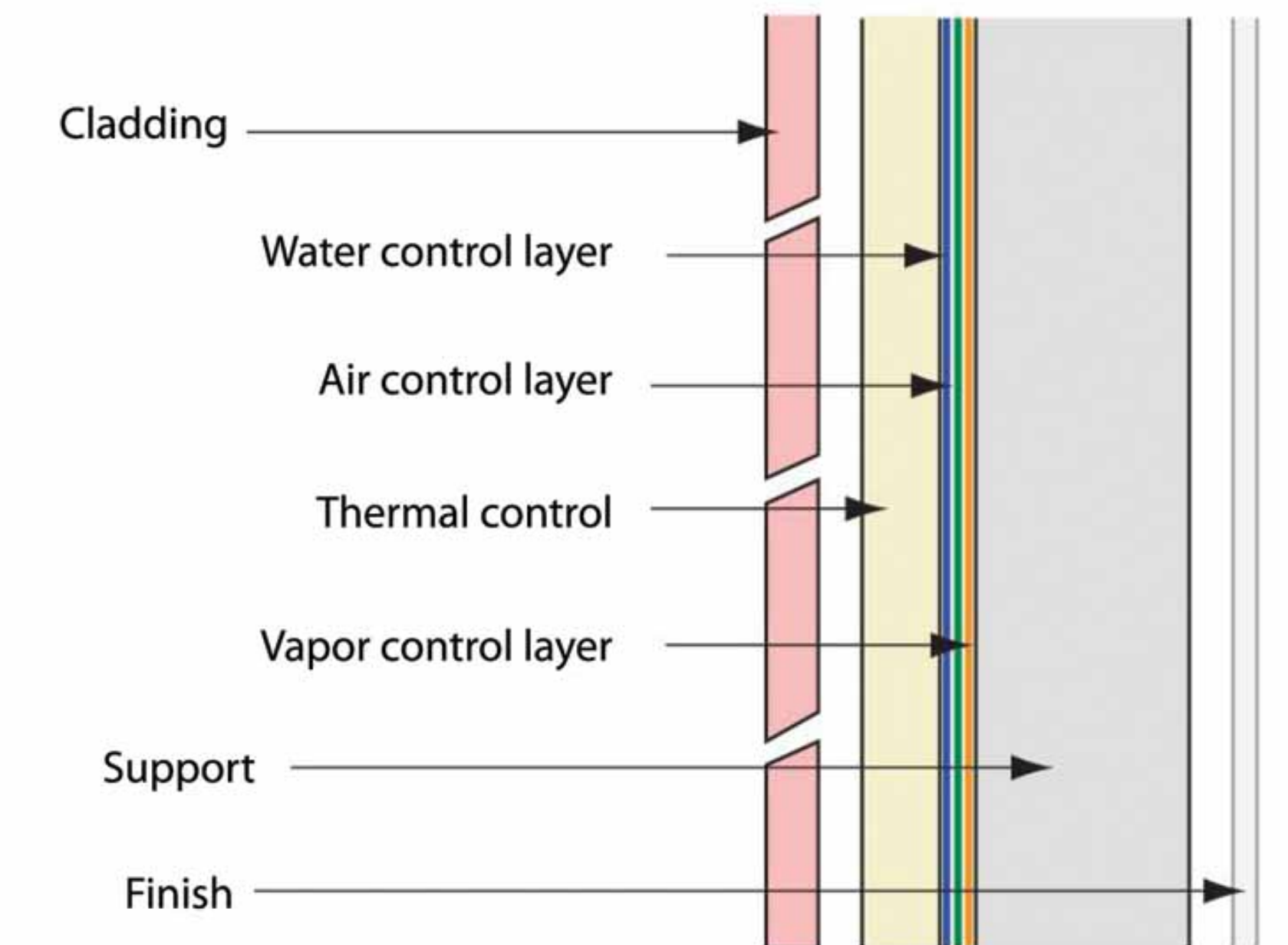


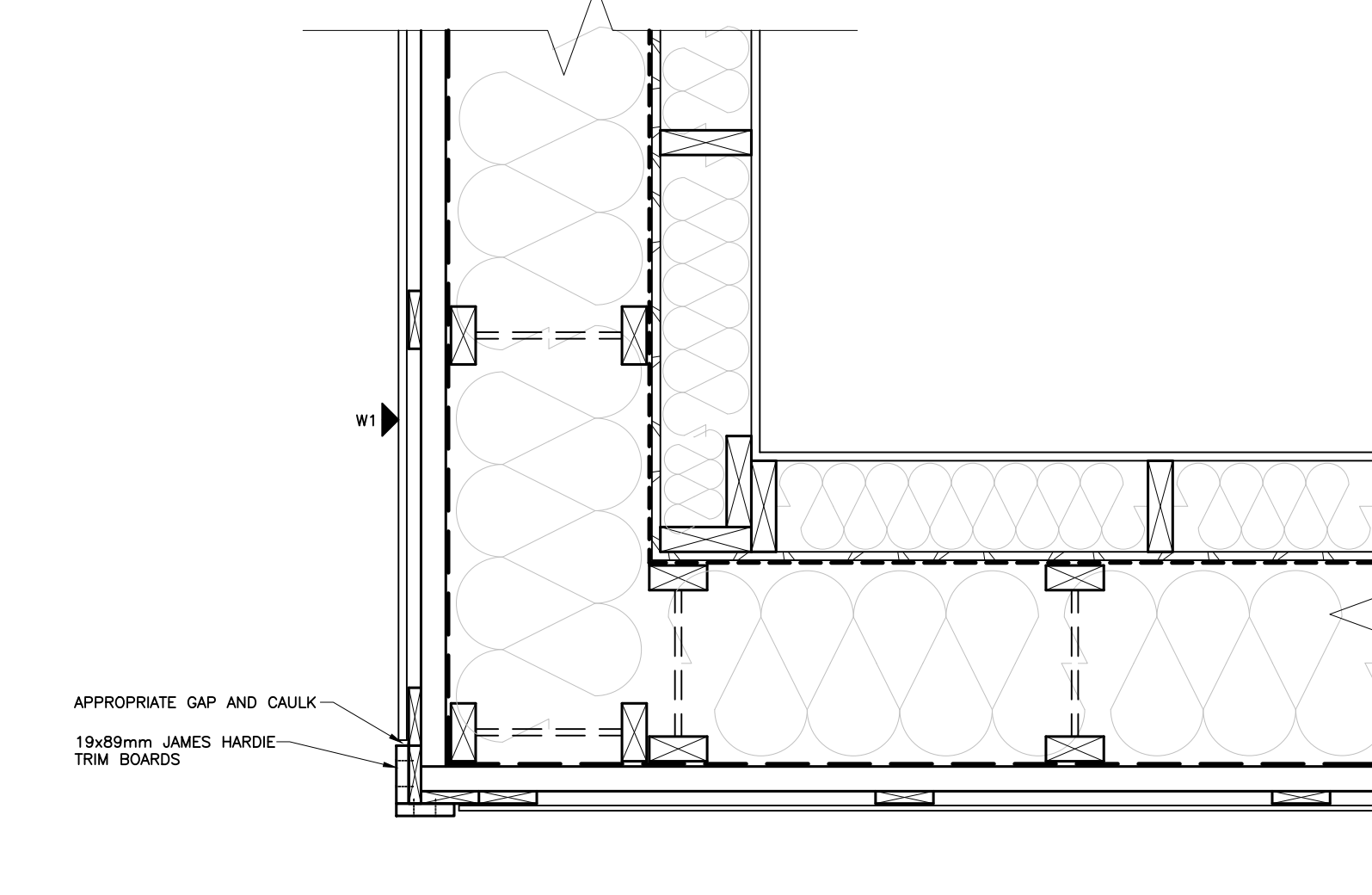
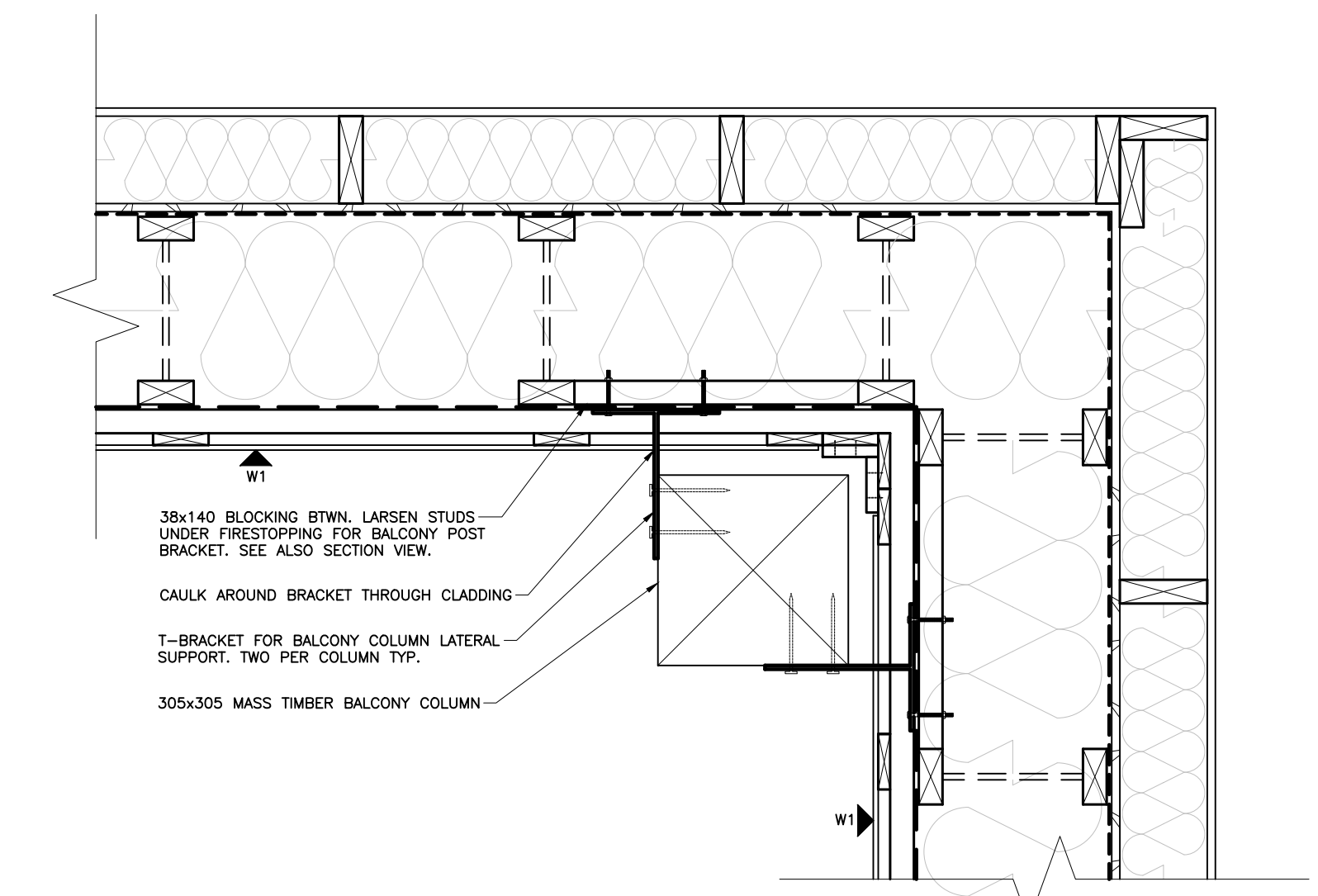
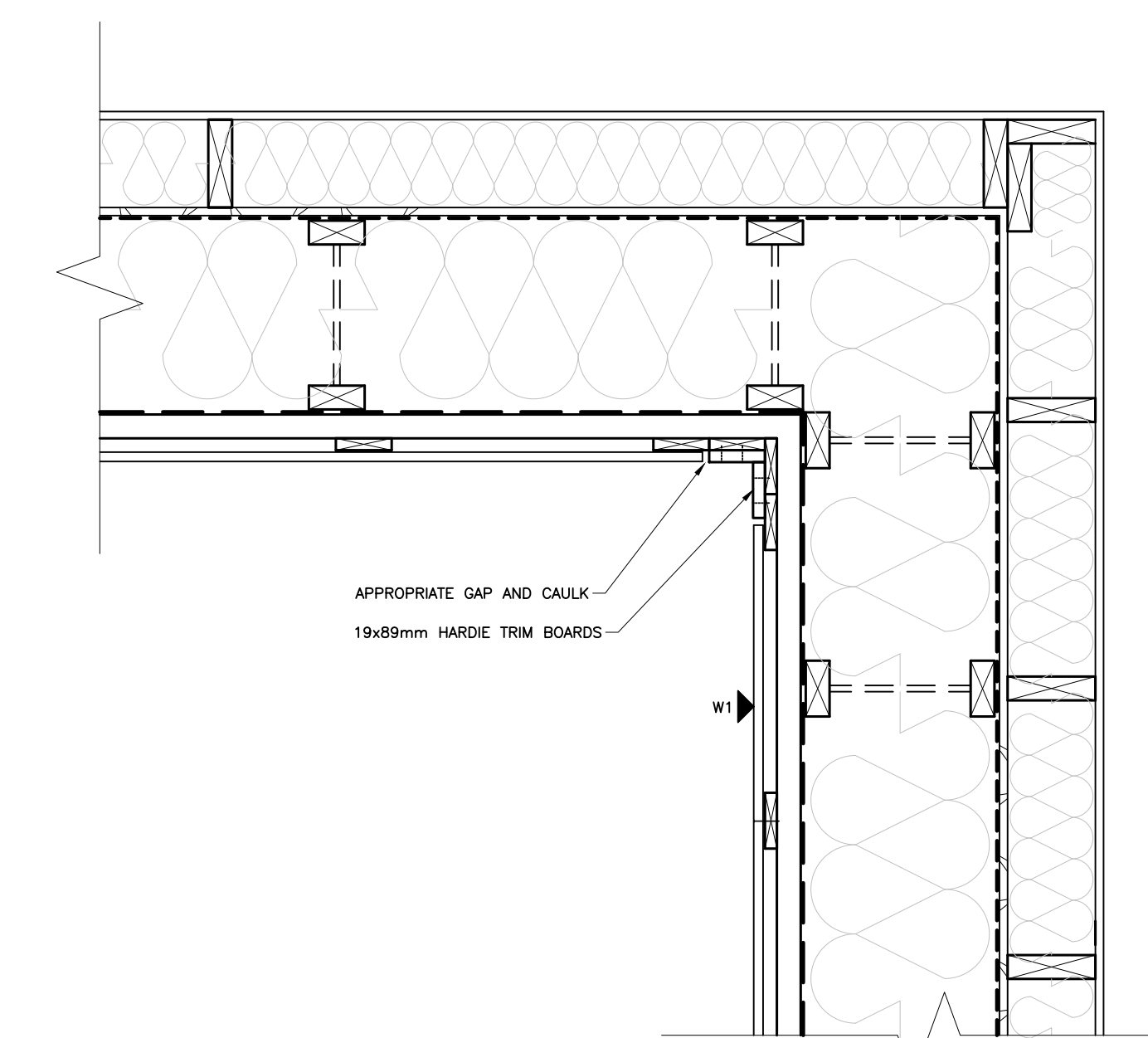
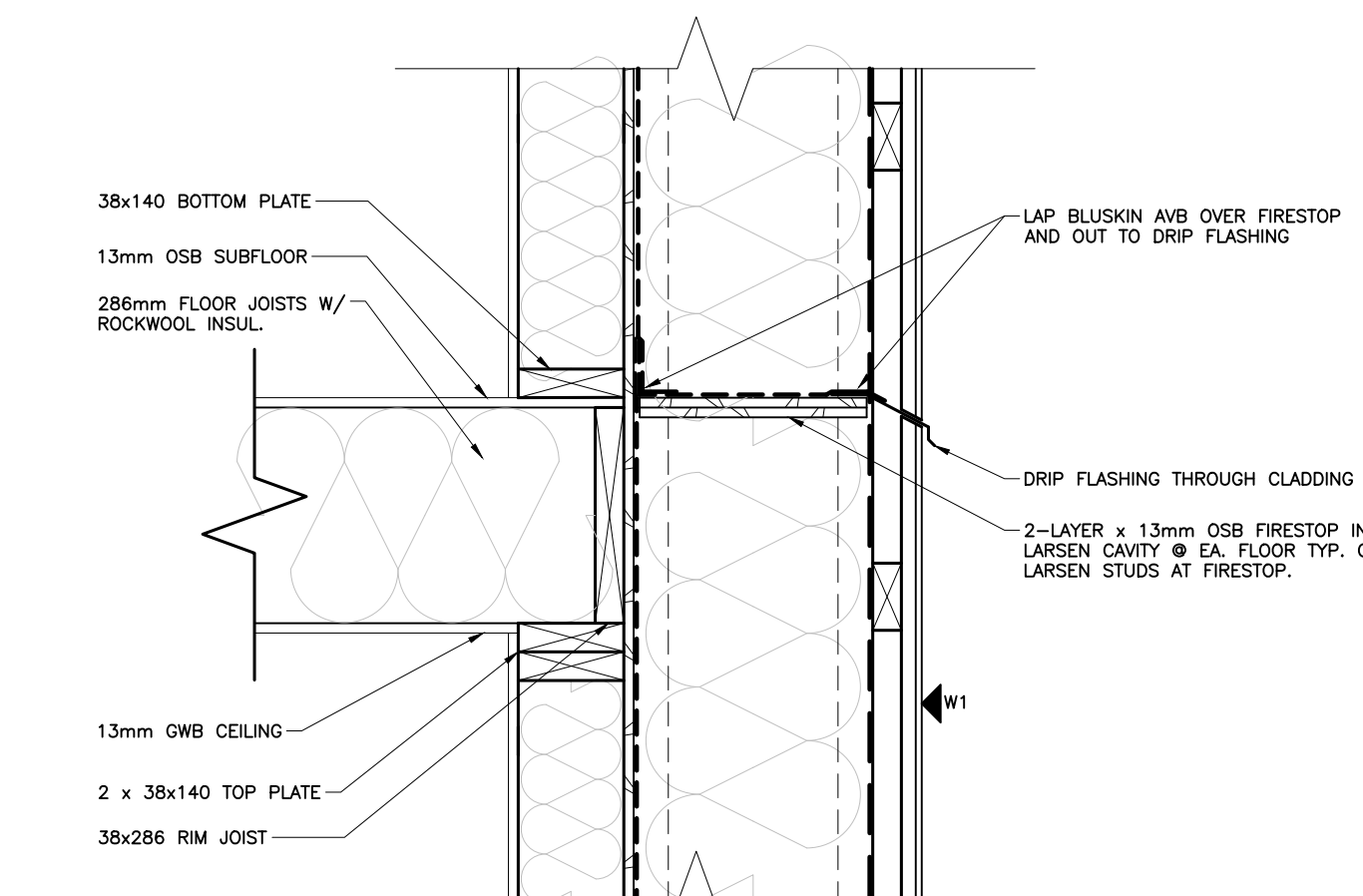
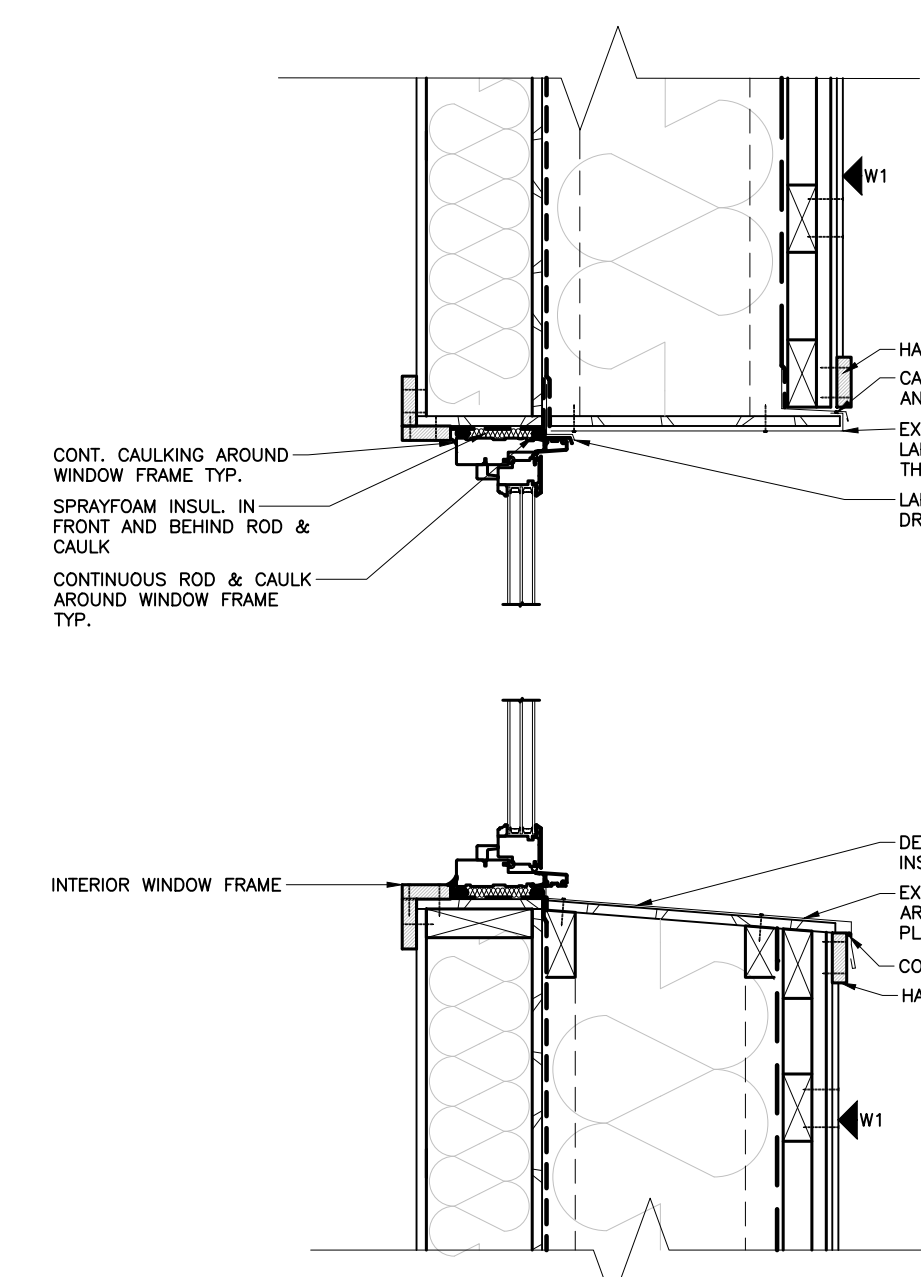
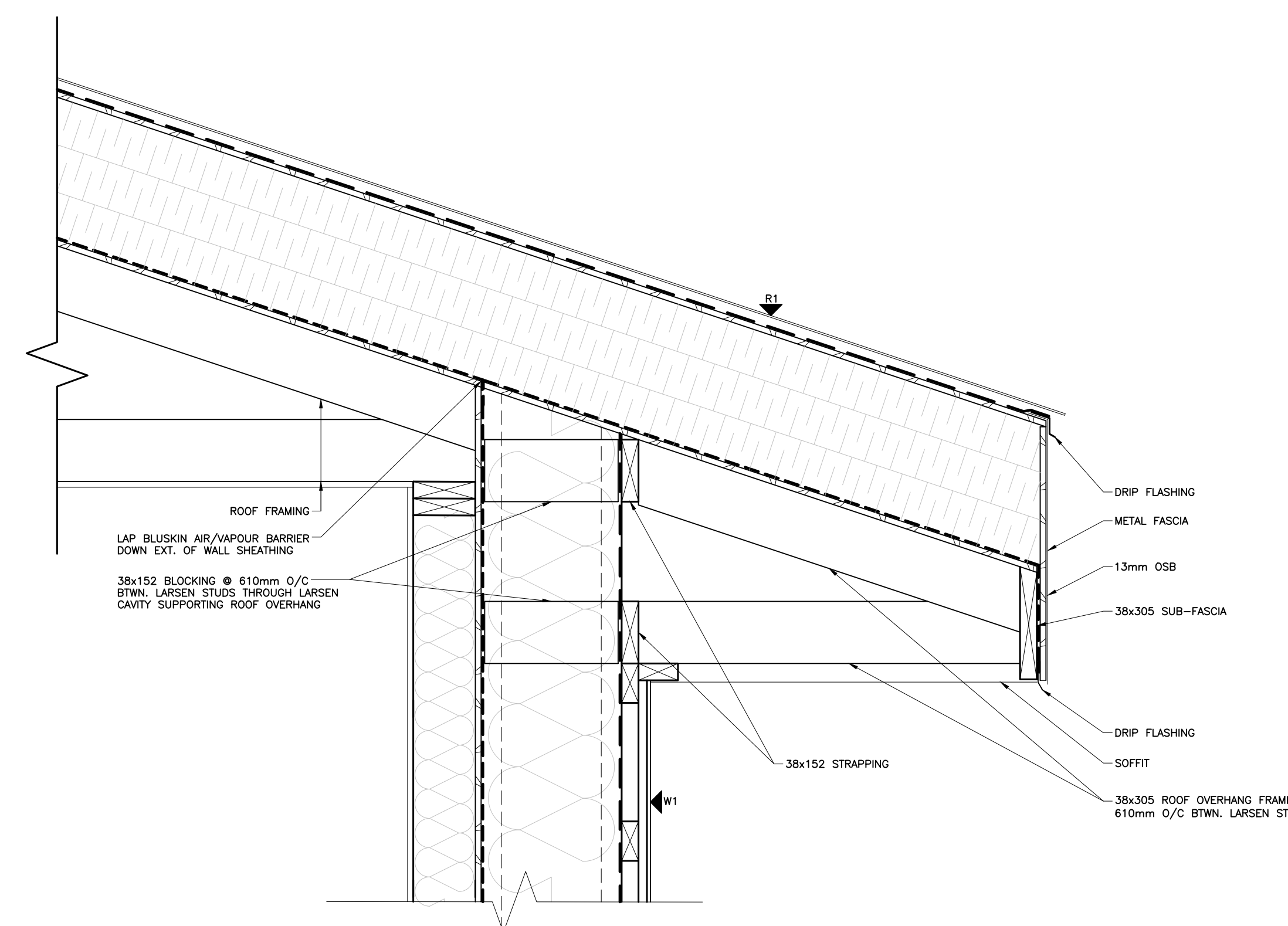
Exploring the Larsen Truss in Modern Construction

Invented by John Larsen in 1979, the Larsen Truss is a simple way to add a thick layer of insulation on the exterior of the building structure while still offering a support system for the cladding. This system provides a highly thermally efficient wall that can withstand Manitoba's deep winter temperatures. It minimizes thermal bridging and maximizes thermal control efficiency, boosting the R-value of a wall assembly by a considerable amount.

in Modern Construction



The Larsen Truss system emulates the perfect wall by keeping the structure and air, vapour, and water control layers within the Thermal Control Layer



PRESENTED BY
Kepler Blumrich
Sheldon Greene
Laura Li
Carl Natiuk