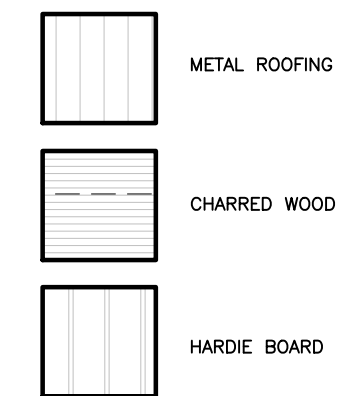


**MATERIAL FINISH SCHEDULE**

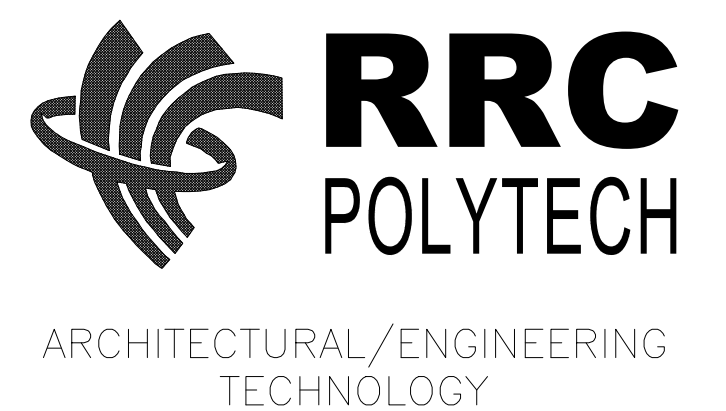


**ASSEMBLY SCHEDULE**

- W1 - EXTERIOR CLADDING (REFER TO ELEVATIONS)
  - 1x4 STRAPPING VERT. @ 610mm O/C
  - 2x4 STRAPPING HORIZ. @ 610mm O/C
  - VAPOR PERMEABLE MEMBRANE TO CONTAIN INSUL.
  - 302mm LARSEN TRUSS @ 610mm O/C
  - BLUESKIN AFB
  - 13mm OSB SHEATHING
  - 140mm (2x6) STUDS @ 610mm O/C
  - ROCKWOOL IN STUD CAVITY
  - 13mm GWB
- R1 - STANDING SEAM METAL ROOF
  - 25mm VENTILATION GAP
  - SECONDARY DRAINAGE MAT
  - 13mm OSB ROOF SHEATHING
  - 3 LAYER 102mm RIGID INSUL.
  - BLUESKIN AFB
  - 13mm OSB SHEATHING

NO.	DATE	ISSUANCE / REVISION	BY

DRAWN BY: GROUP 3: BLUMRICH, GREENE, LI, NATIUK  
 PRINT DATE: 2026-03-02



PROJECT

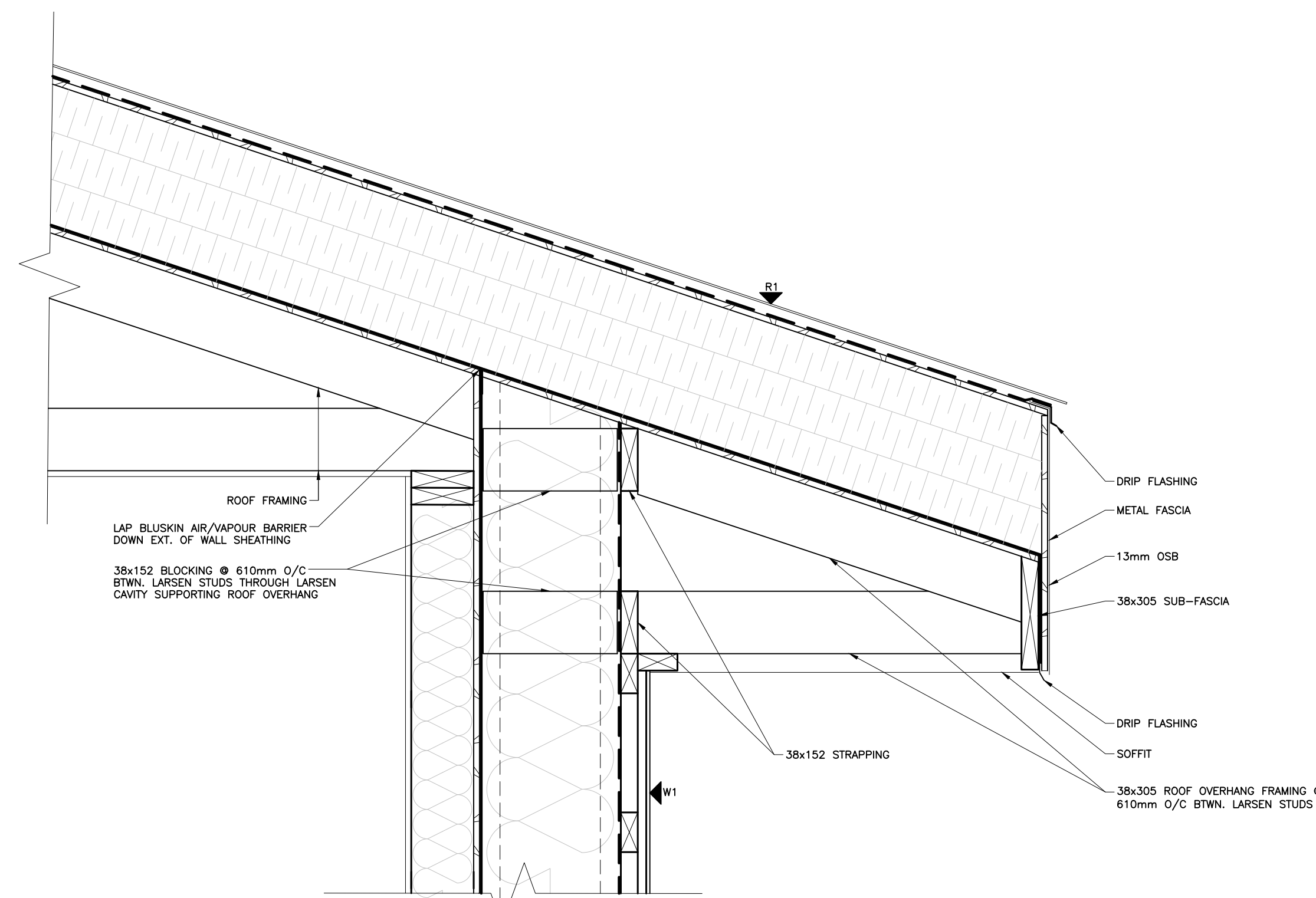
**BUILDING ENVELOPE  
 DESIGN COMPETITION**

SHEET NAME

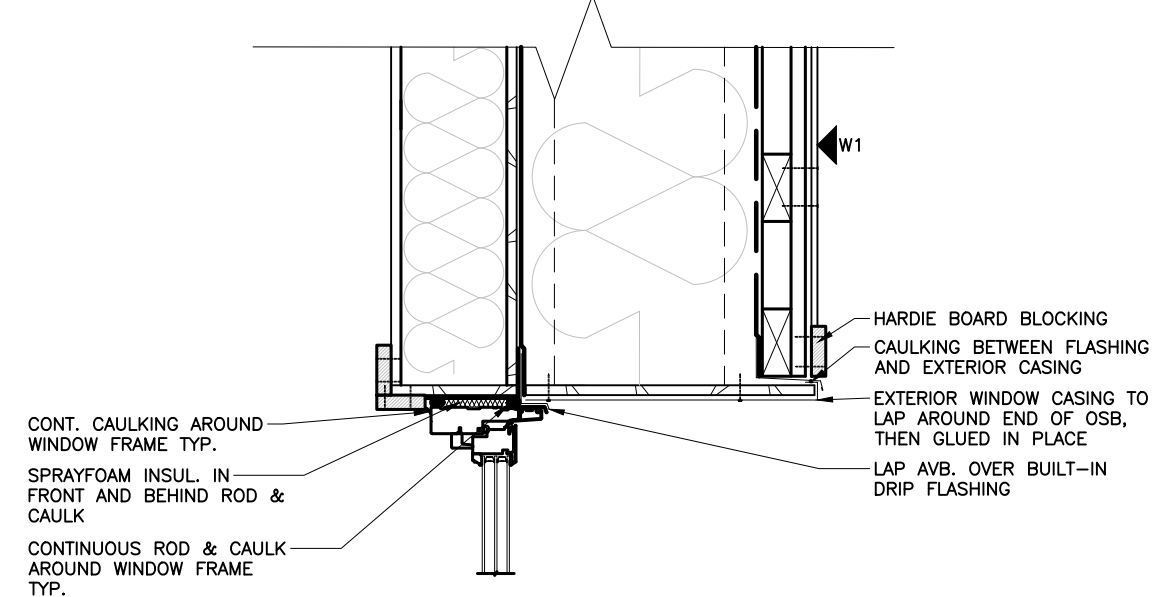
**BUILDING ELEVATIONS  
 & MATERIALS**

ASSIGNMENT: -

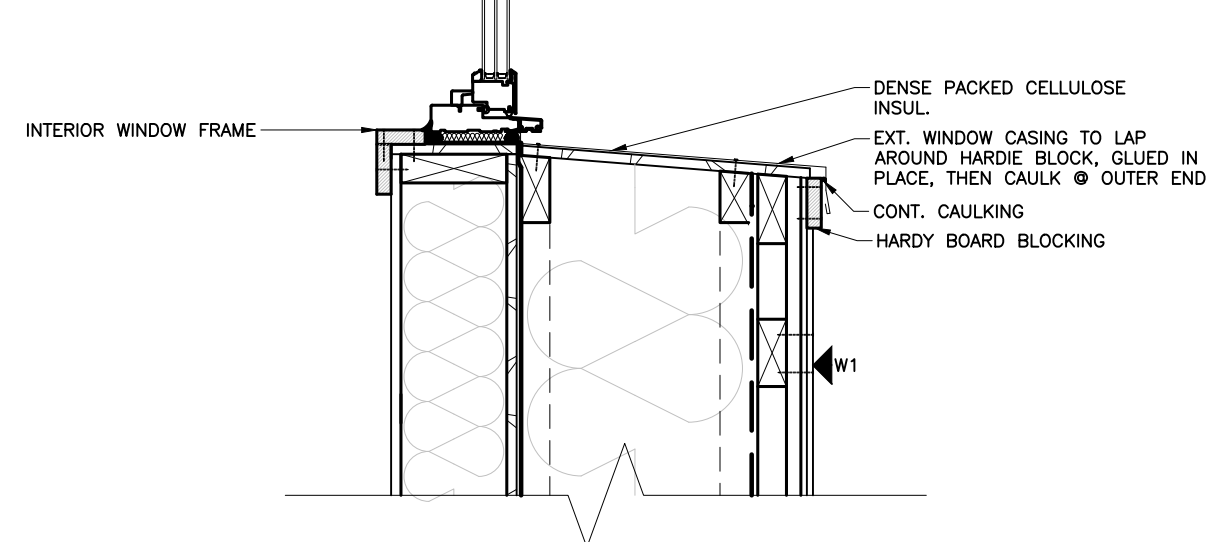
SHEET: **A1.1**



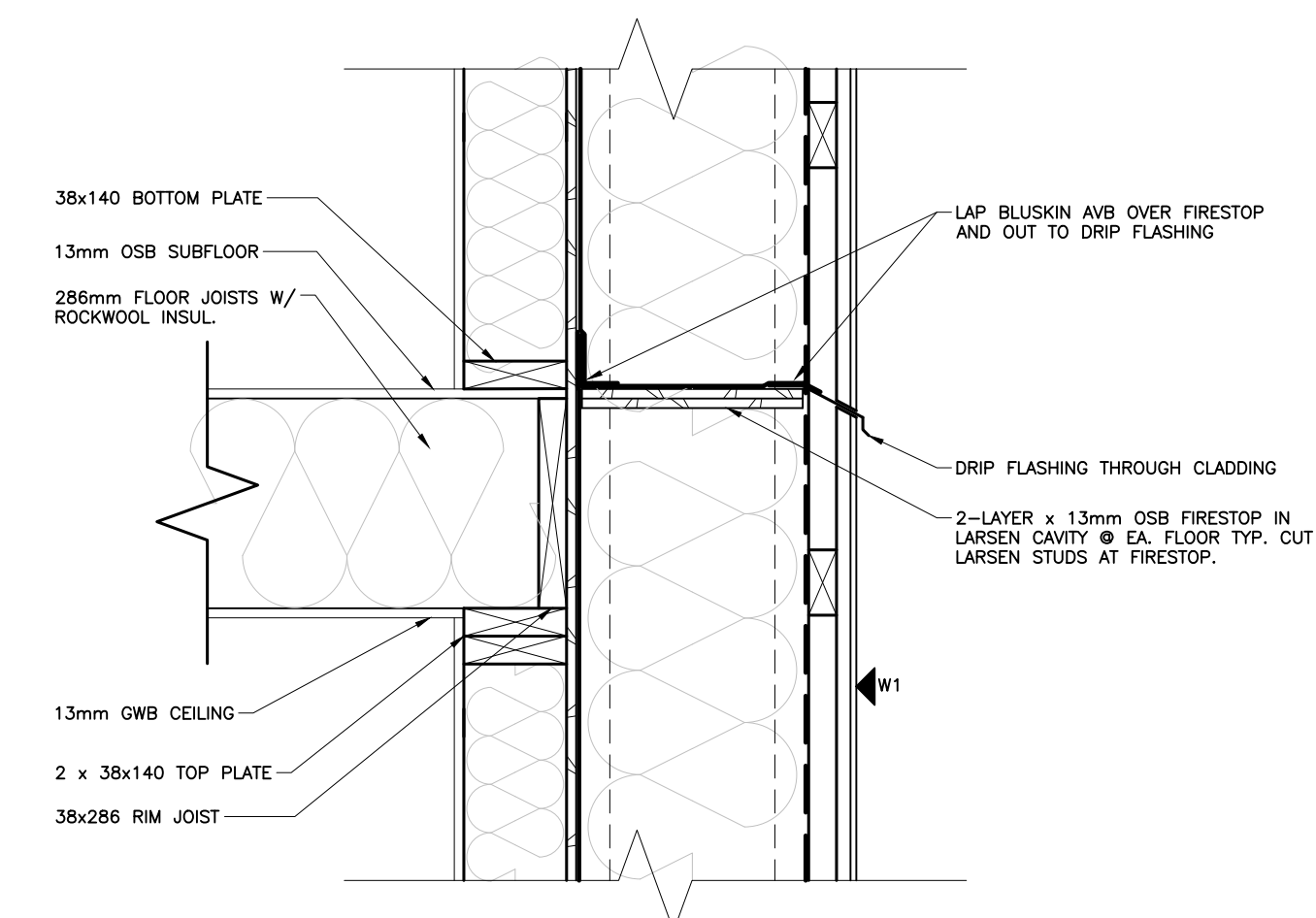
1 ROOF OVERHANG SECTION  
SCALE: 1:10



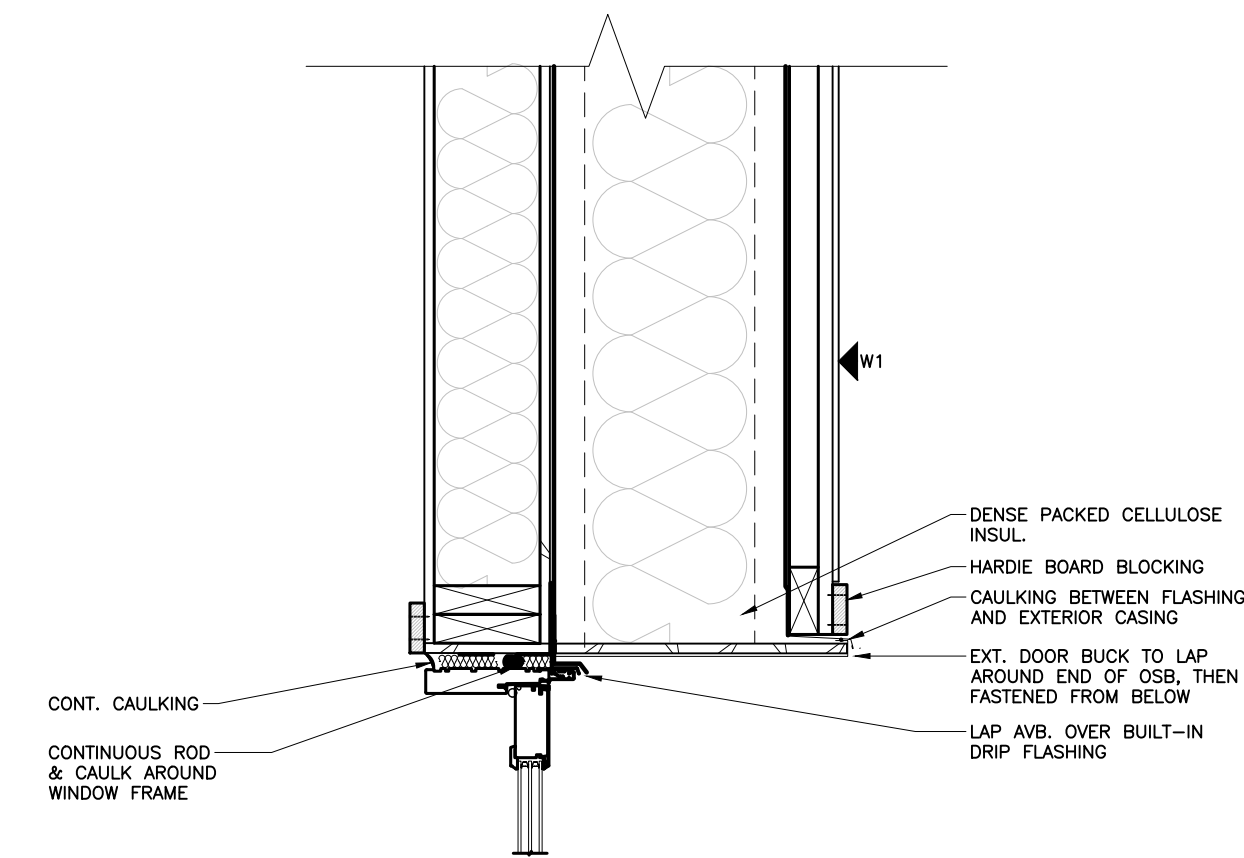
2 WINDOW SECTION  
SCALE: 1:10



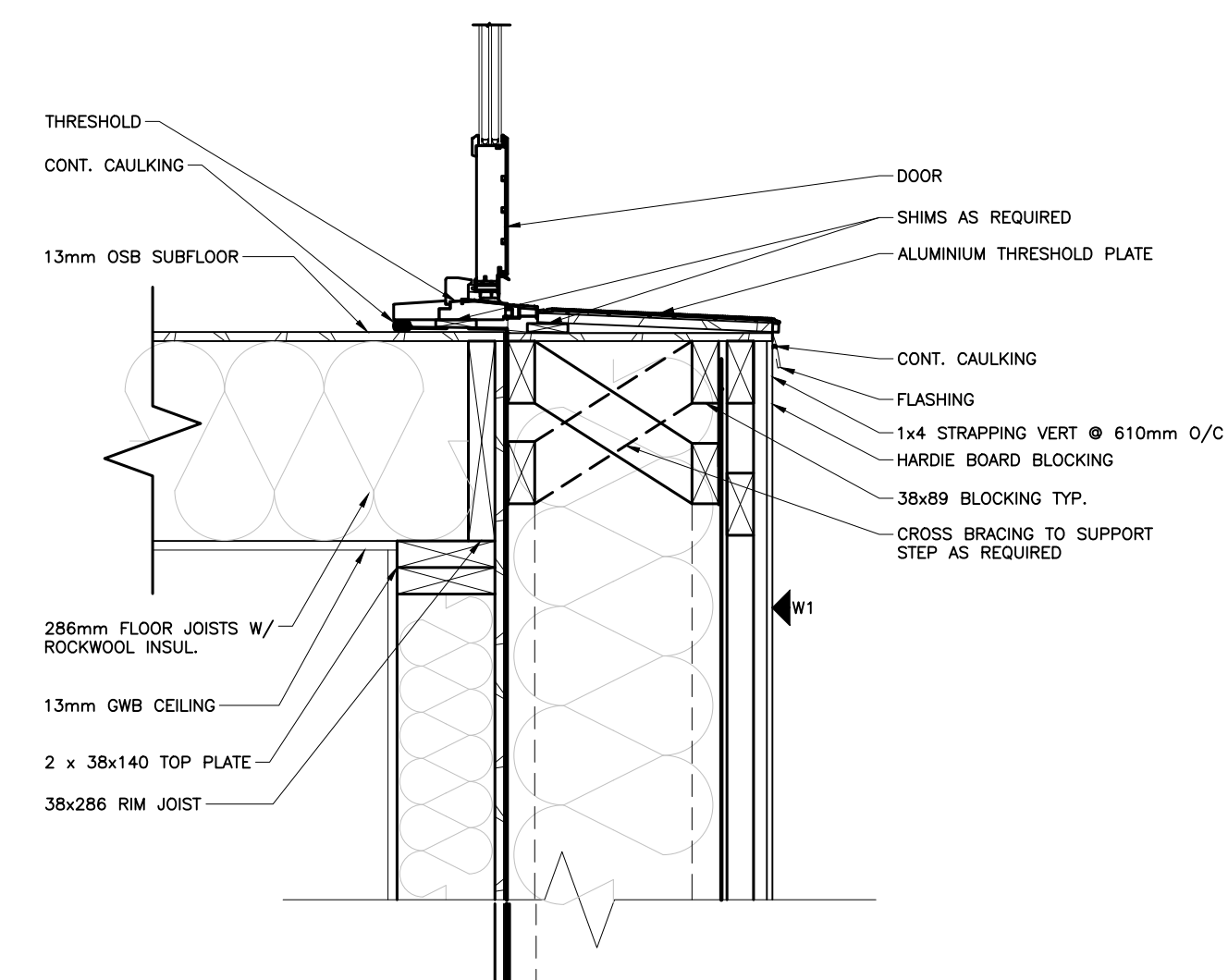
3 WINDOW SECTION  
SCALE: 1:10



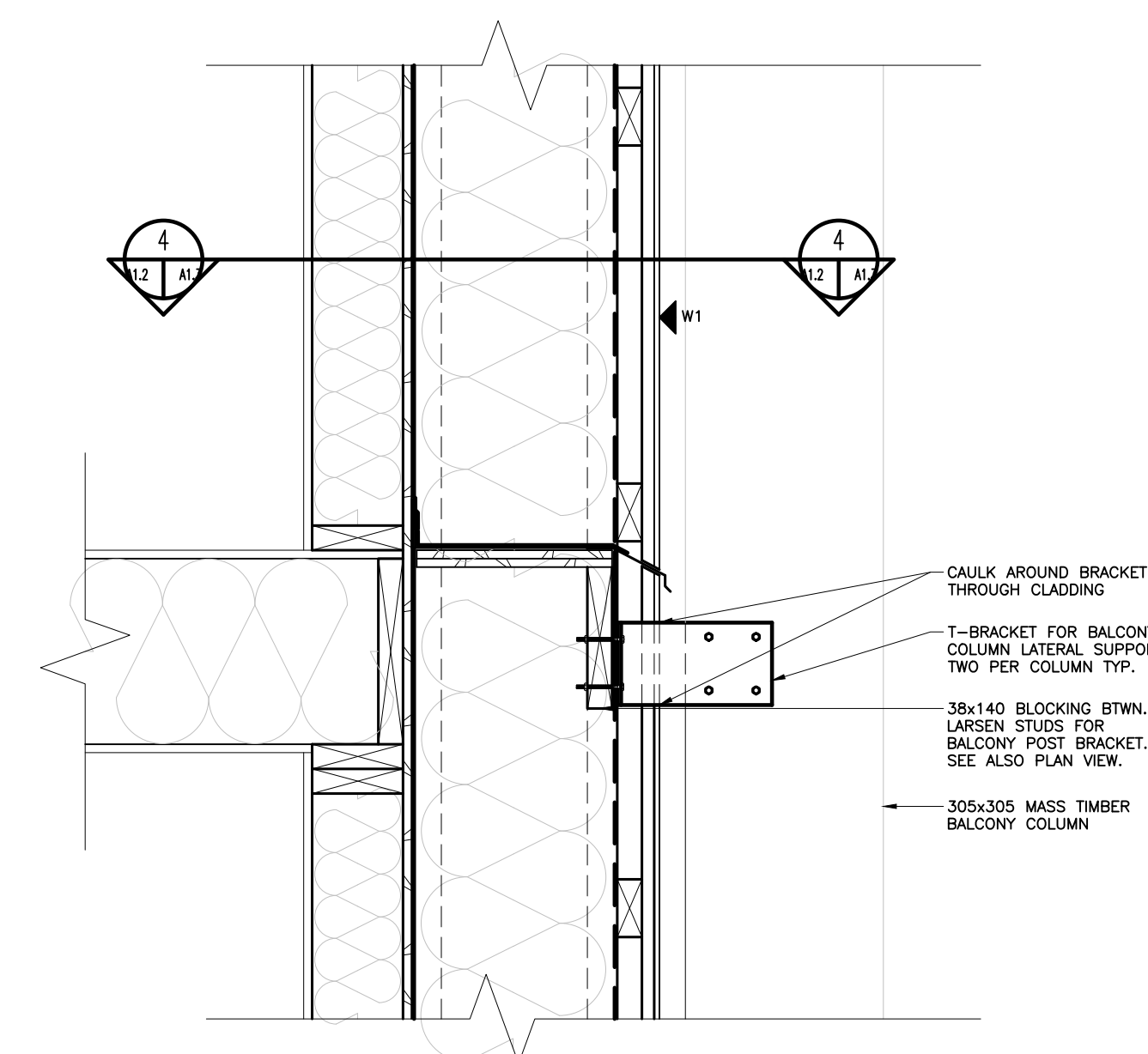
4 FLOOR @ EXTERIOR WALL SECTION  
SCALE: 1:10



5 DOOR HEADER SECTION  
SCALE: 1:10



6 DOOR FOOTER SECTION  
SCALE: 1:10



7 BALCONY CONNECTION DETAIL  
SCALE: 1:10

ASSEMBLY SCHEDULE

- W1 - EXTERIOR CLADDING (REFER TO ELEVATIONS)
- 1x4 STRAPPING VERT. @ 610mm O/C
- 2x4 STRAPPING HORIZ. @ 610mm O/C
- VAPOR PERMEABLE MEMBRANE TO CONTAIN INSUL.
- 302mm LARSEN TRUSS @ 610mm O/C
- BLUESKIN AVB
- 13mm OSB SHEATHING
- 140mm (2x6) STUDS @ 610mm O/C
- ROCKWOOL IN STUD CAVITY
- 13mm OSB
- R1 - STANDING SEAM METAL ROOF
- 25mm VENTILATION GAP
- SECONDARY DRAINAGE MAT
- 13mm OSB ROOF SHEATHING
- 3 LAYER 102mm RIGID INSUL.
- BLUESKIN AVB
- 13mm OSB SHEATHING

NO.	DATE	ISSUANCE / REVISION	BY

DRAWN BY: GROUP 3: BLUMRICH, GREENE, LI, NATIUK  
PRINT DATE: 2026-03-02



ARCHITECTURAL/ENGINEERING TECHNOLOGY

PROJECT

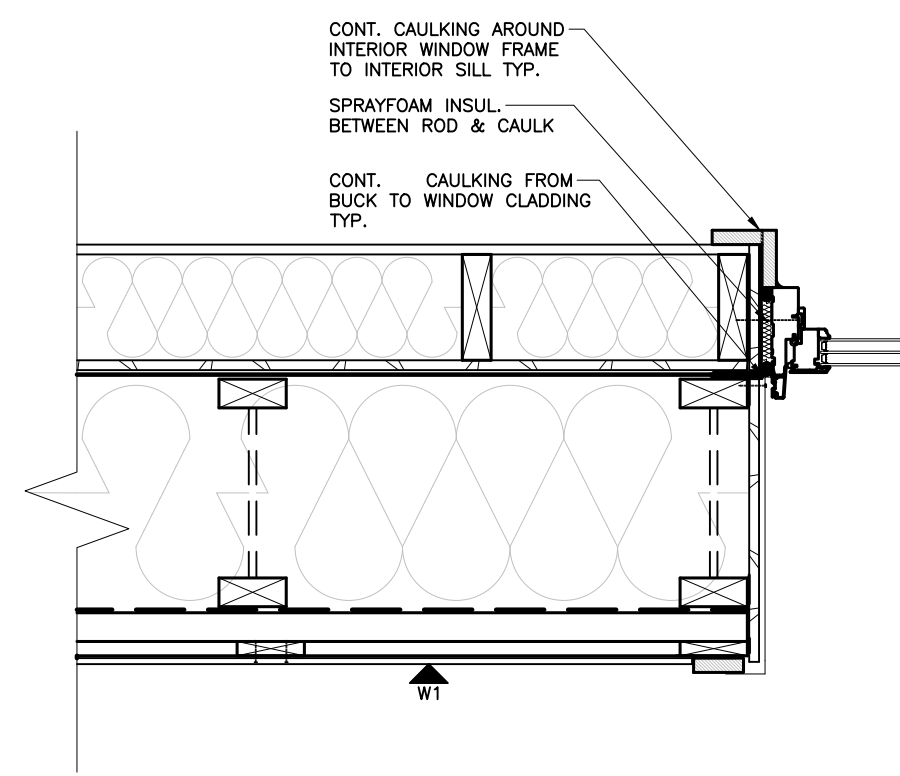
BUILDING ENVELOPE DESIGN COMPETITION

SHEET NAME

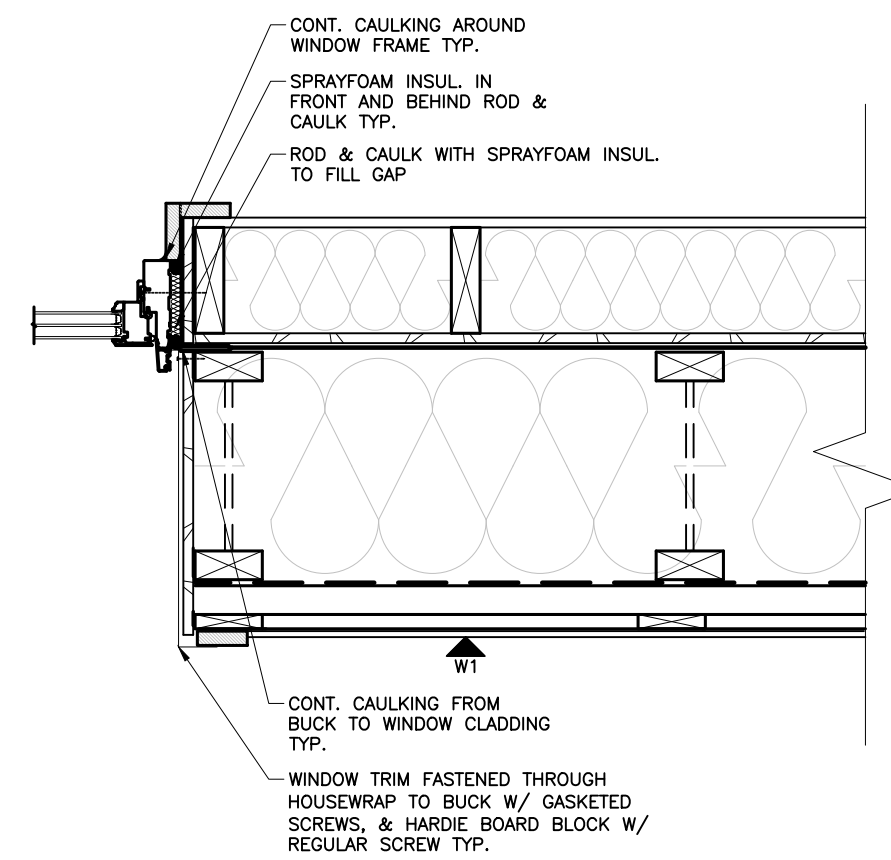
SECTION DETAILS

ASSIGNMENT: -

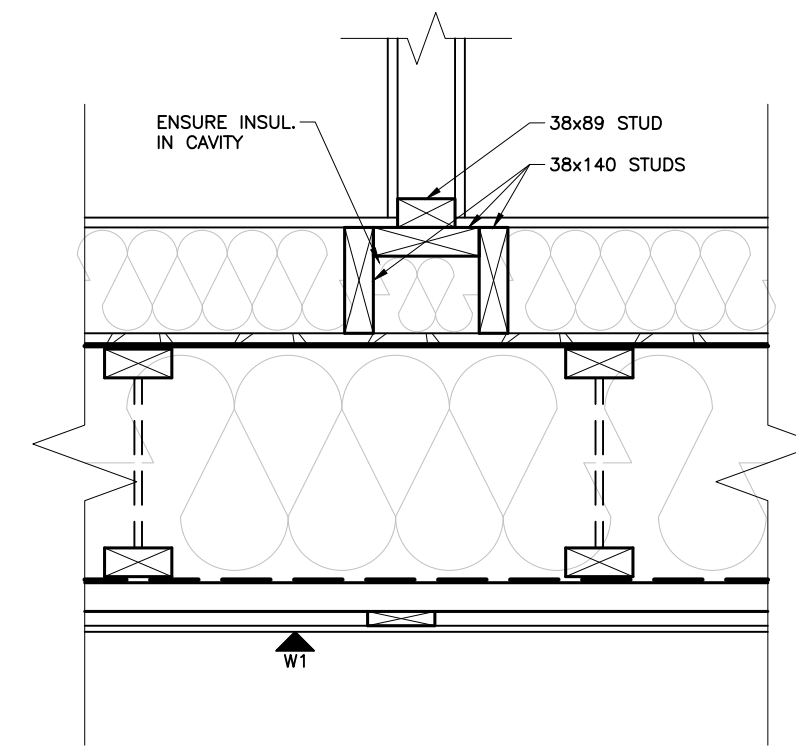
SHEET: A1.2



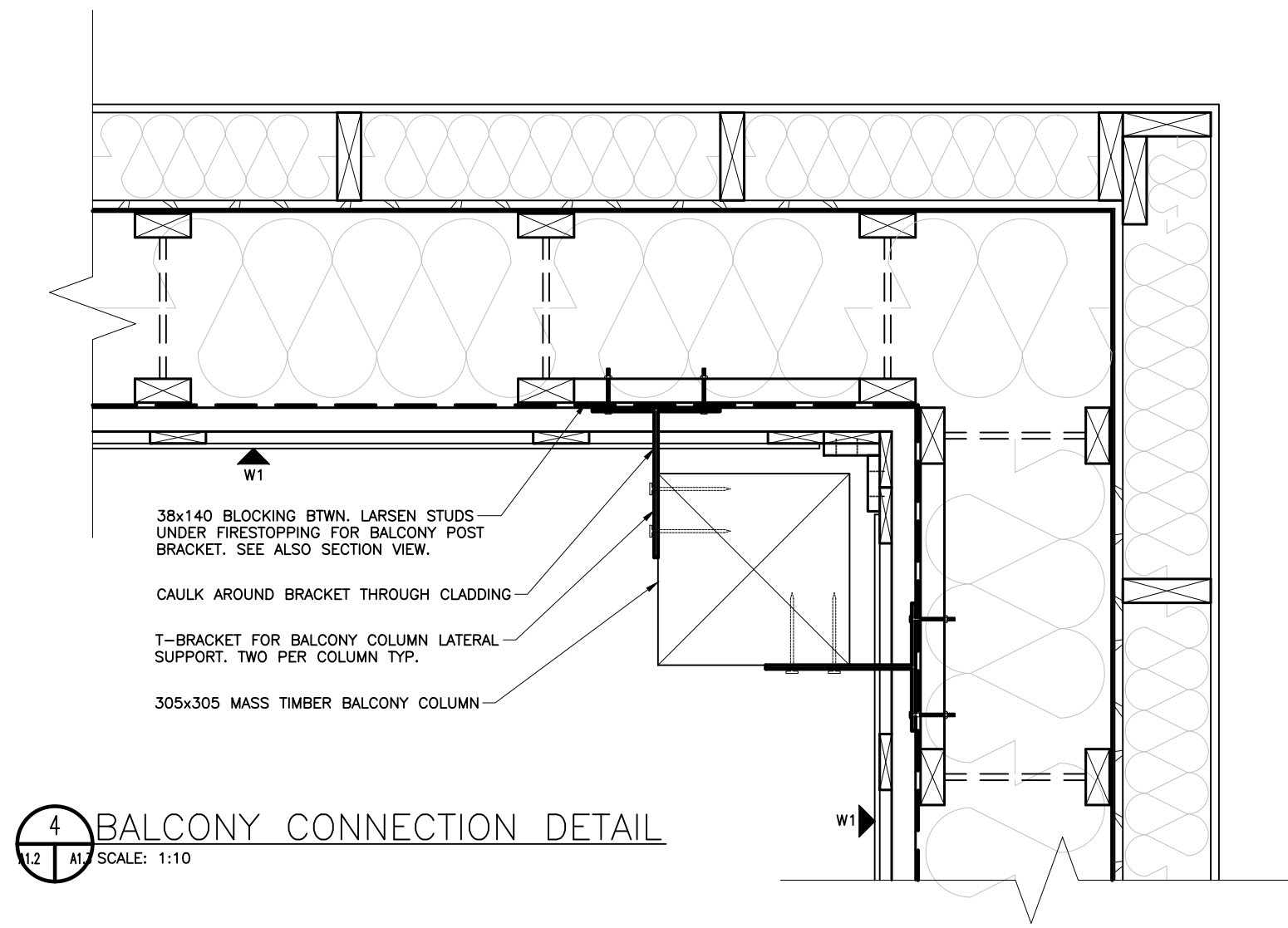
1 LEFT WINDOW JAMB DETAIL  
SCALE: 1:10



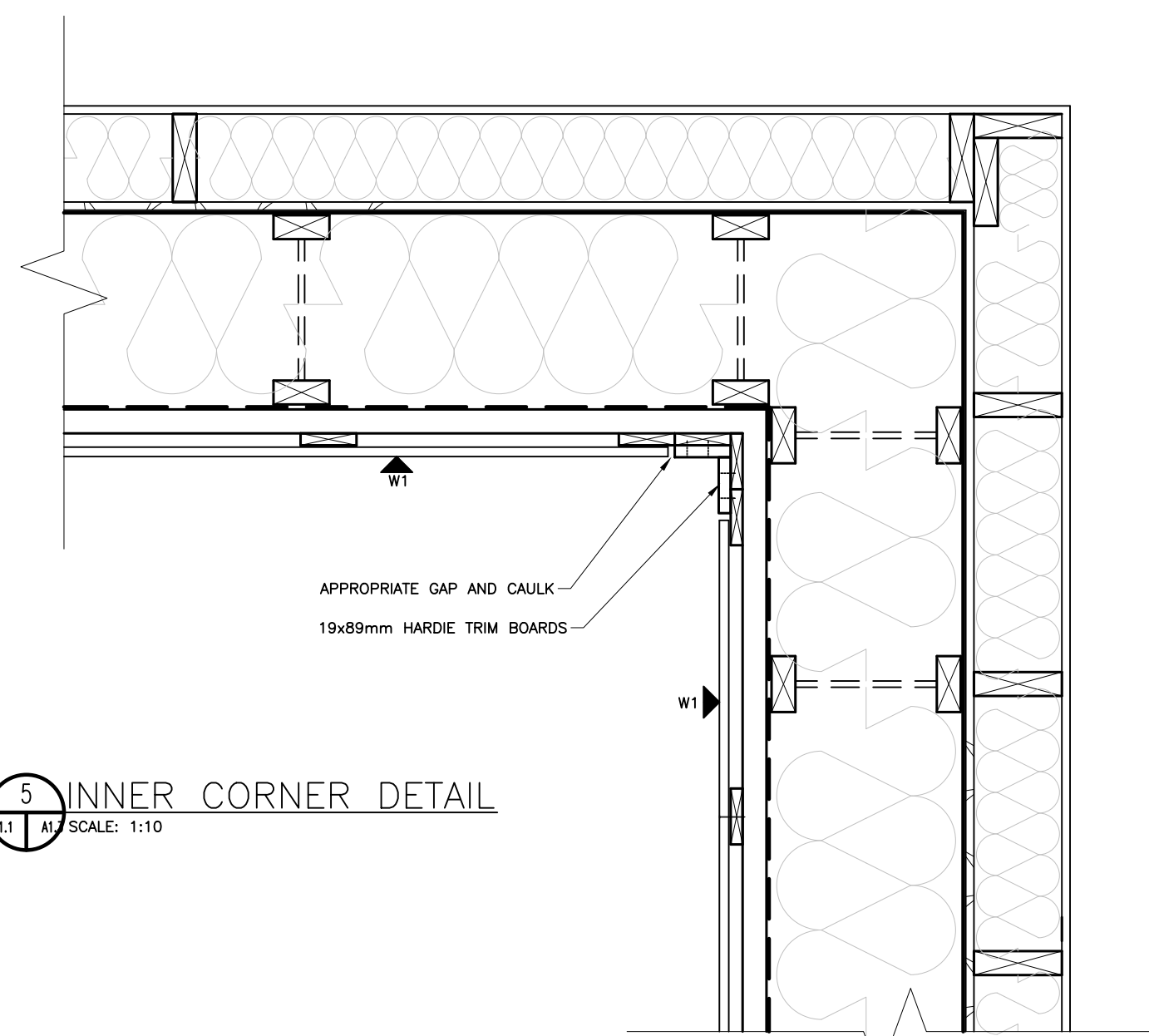
2 RIGHT WINDOW JAMB DETAIL  
SCALE: 1:10



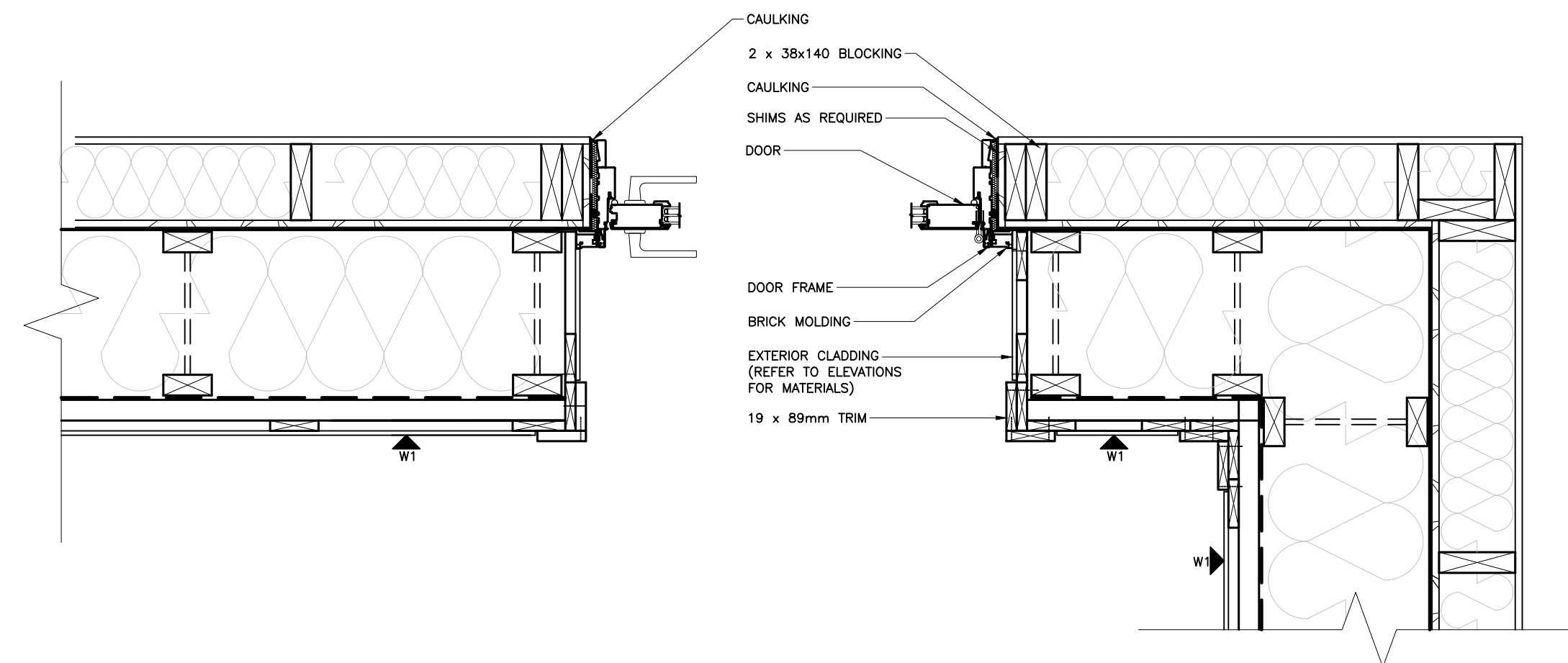
3 INTERIOR WALL CONNECTION DETAIL  
SCALE: 1:10



4 BALCONY CONNECTION DETAIL  
SCALE: 1:10

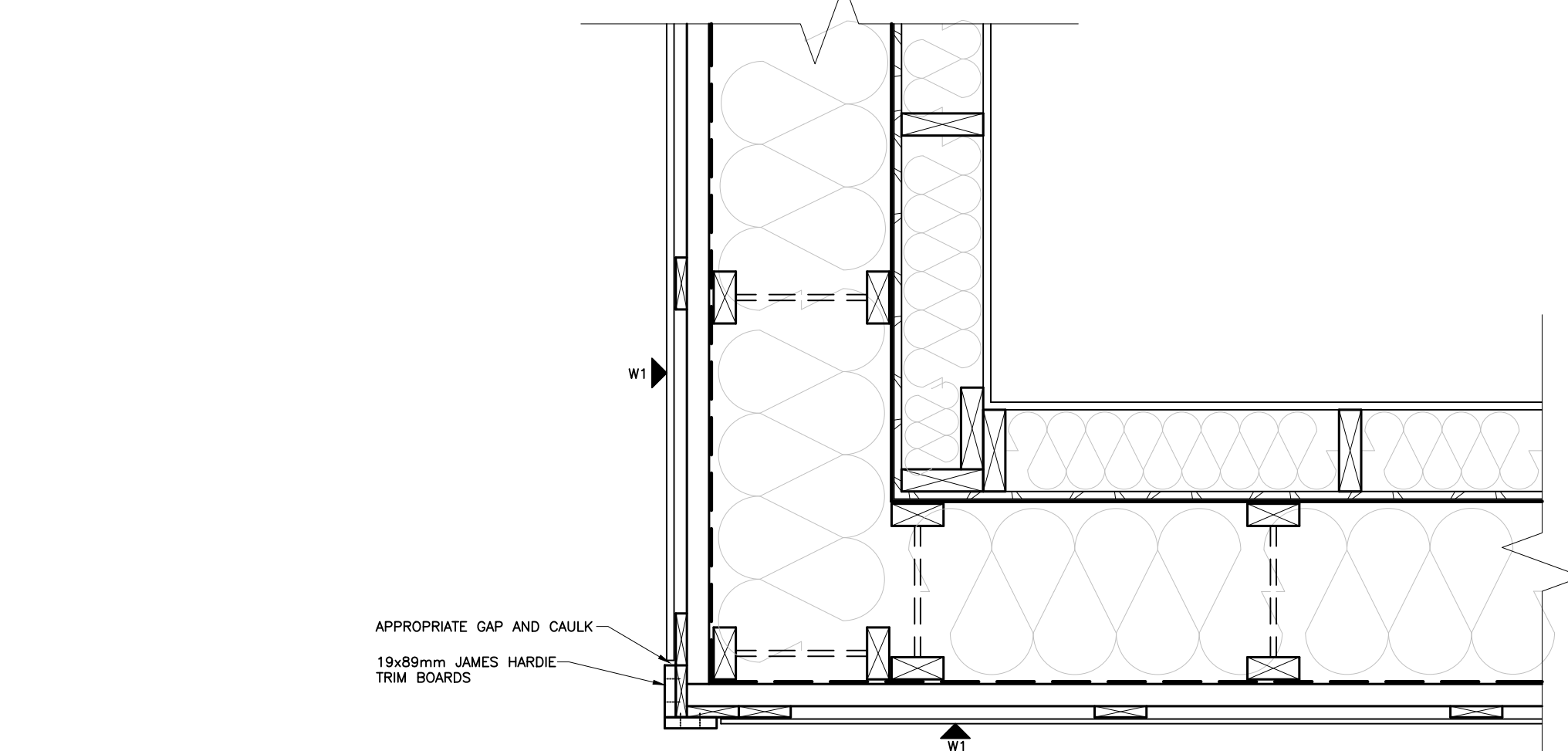


5 INNER CORNER DETAIL  
SCALE: 1:10



6 DOOR HANDEL PORTION DETAIL  
SCALE: 1:10

7 DOOR HINGE PORTION DETAIL  
SCALE: 1:10



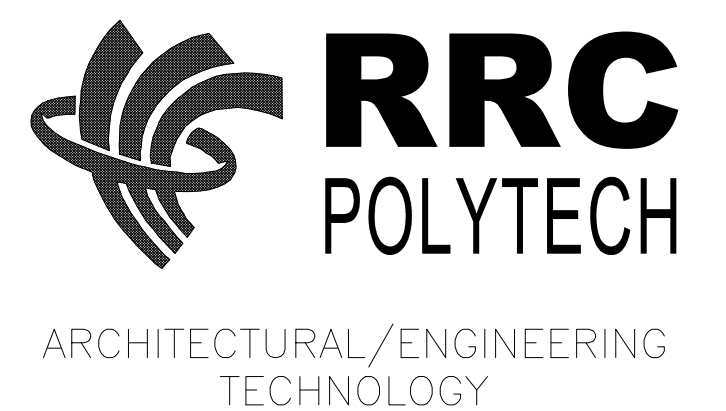
8 OUTER CORNER DETAIL  
SCALE: 1:10

ASSEMBLY SCHEDULE

- W1 - EXTERIOR CLADDING (REFER TO ELEVATIONS)
  - 1x4 STRAPPING VERT. @ 610mm O/C
  - 2x4 STRAPPING HORIZ. @ 610mm O/C
  - VAPOR PERMEABLE MEMBRANE TO CONTAIN INSUL.
  - 302mm LARSEN TRUSS @ 610mm O/C
  - BLUESKIN AVB
  - 13mm OSB SHEATHING
  - 140mm (2x6) STUDS @ 610mm O/C
  - ROCKWOL IN STUD CAVITY
  - 13mm CWB
- R1 - STANDING SEAM METAL ROOF
  - 20mm VENTILATION GAP
  - SECONDARY DRAINAGE MAT
  - 13mm OSB ROOF SHEATHING
  - 3 LAYER 150mm ROOF INSUL.
  - BLUESKIN AVB
  - 13mm OSB SHEATHING

NO.	DATE	ISSUANCE / REVISION	BY

DRAWN BY: GROUP 3: BLUMRICH, GREENE, LI, NATIUK  
PRINT DATE: 2026-03-02



PROJECT

**BUILDING ENVELOPE  
DESIGN COMPETITION**

SHEET NAME

**PLAN DETAILS**

ASSIGNMENT: -

SHEET: **A1.3**